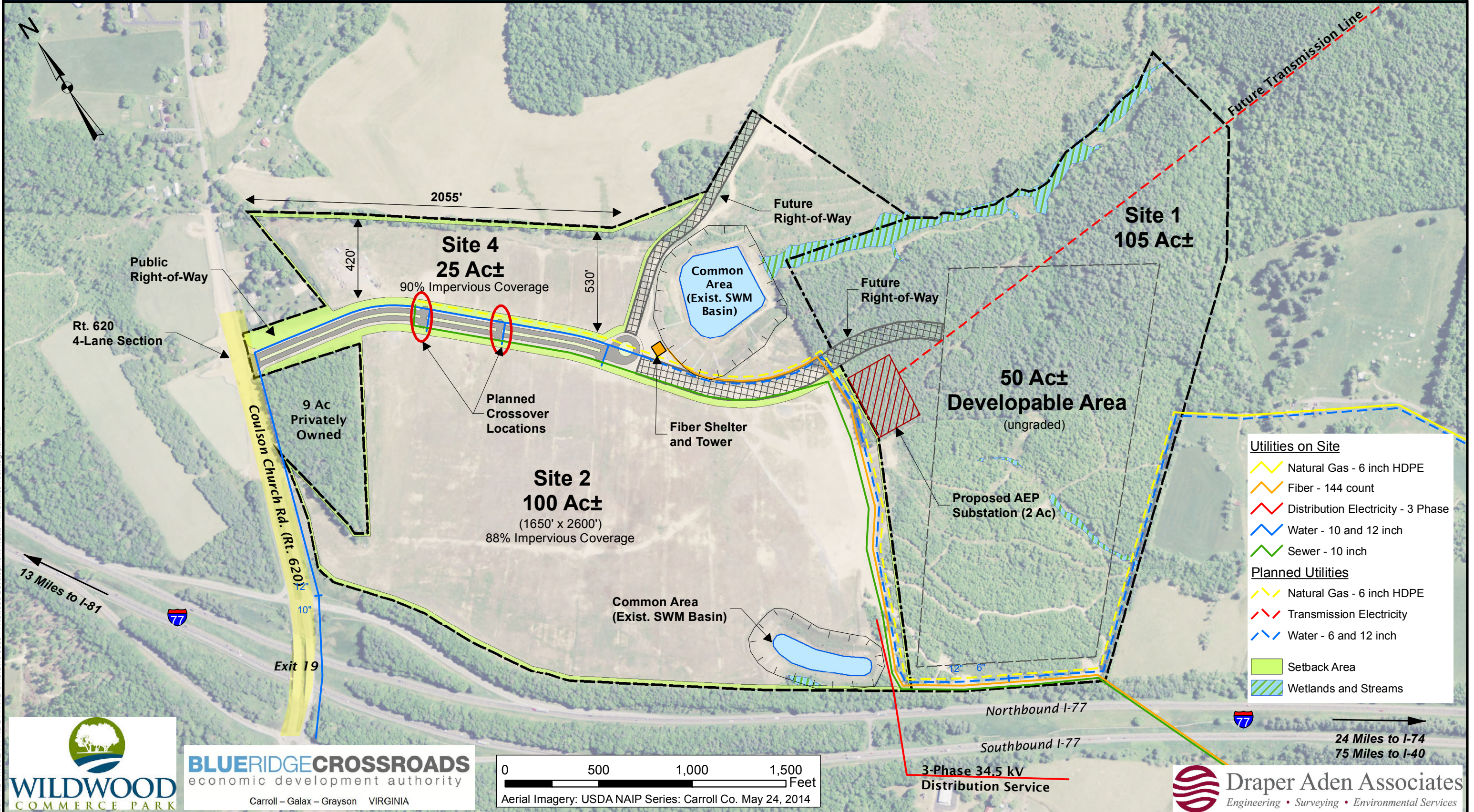


SITE PLAN WITH UTILITIES (JULY 2015)

WILDWOOD COMMERCE PARK

CARROLL COUNTY, VIRGINIA

Coordinates: Lat. 36.783 Long. -80.821

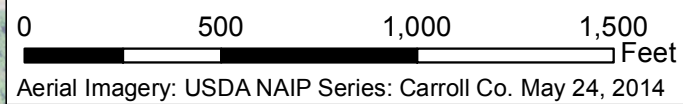


Path: P:\B11100\B11144\B11144B-01\GIS\15 0609 - Wildwood Development Tracts with utilities v3brklegend.mxd



BLUERIDGE CROSSROADS
economic development authority

Carroll - Galax - Grayson VIRGINIA



Utilities on Site	
	Natural Gas - 6 inch HDPE
	Fiber - 144 count
	Distribution Electricity - 3 Phase
	Water - 10 and 12 inch
	Sewer - 10 inch
Planned Utilities	
	Natural Gas - 6 inch HDPE
	Transmission Electricity
	Water - 6 and 12 inch
	Setback Area
	Wetlands and Streams



24 Miles to I-74
75 Miles to I-40